



Xiamen Solar First Energy Technology Co.,Ltd

Add:17th Floor, Building No.3, Xinglinwan Operation Center,
Jimei District, Xiamen City, P. R. China
Tel: +86-592-5211-388
Fax: +86-592-5235-788
E-mail: info@esolarfirst.com
Web: <http://www.esolarfirst.com>



WAP



XIAMEN SOLAR FIRST ENERGY TECHNOLOGY CO.,LTD.

Xiamen Solar First Energy Technology Co., Ltd. is a high-tech enterprise specialized in manufacturing solar PV products. With our professional R & D team, efficient management team and high quality of the workforce, Solar First staffs commit to provide customers with the most stable & reliable, economical & efficient solar PV system solutions.

Since establishment, Solar First solar PV products have been taking the lead in the global PV markets, with products sold well in more than 100 countries and regions, and has become one of the largest export enterprises of solar PV products and production & sales integrated enterprise.

COMPANY PROFILE



CONTENTS



- FIXED TILT SOLAR RACKING SYSTEM
- ADJUSTABLE TILE ROOF MOUNTING SYSTEM
- TILE ROOF MOUNTING SYSTEM
- TIN ROOF MOUNTING SYSTEM



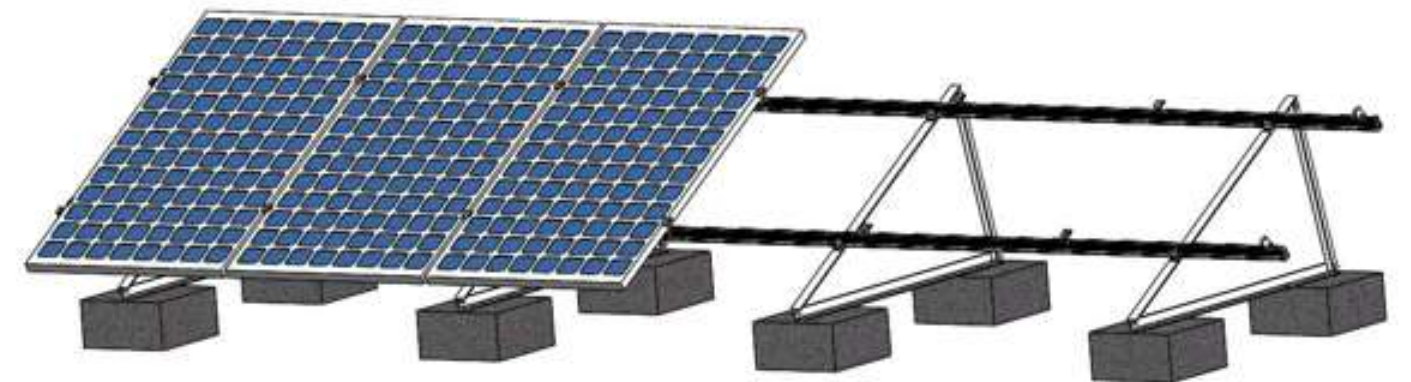
- AL GROUND MOUNTING SYSTEM
- SOLAR FARM MOUNTING SYSTEM
- CARPORT PV GROUND MOUNTING SYSTEM
- SF ALUMINUM CARPORT SYSTEM
- UB GROUND MOUNTING SYSTEM
- PILE GROUND MOUNTING SYSTEM
- POLE GROUND MOUNTING SYSTEM
- C STEEL GROUND MOUNTING SYSTEM
- SOLAR ADJUSTABLE GROUND MOUNTING SYSTEM



- DOUBLE AXIS SOLAR TRACKER
- TILT SINGLE AXIS SOLAR TRACKER
- HCPV SOLAR TRACKER
- FLAT SINGLE AXIS SOLAR TRACKER

This kind of flat roof mounting is designed for the flat roof. It also fits for pitched metal roof which the inclination is less than 10 degrees. The wide range of the components make this mounting system can install all sorts of modules. And there are two alternatives of the panel arrangement, one is in horizontal and the other is in vertical. Because of the concise and professional design, the installation work is very easy.

FIXED TILT SOLAR RACKING SYSTEM



■ Technical Image

Technical Details

Installation site	Low profile roof or flat roof
Tilt Angle	10~60 deg
Building Height	20 m
Max Wind Speed	<60m/s
Snow Load	<1.4KN/m2
Standard	AS/NZS 1170 and other international standard
Material	High Class Aluminum Alloy Al6005-T5& Stainless Steel 304
Anti-corrosive	Anodized aluminum & stainless steel
Color	Natural and Customized
Warranty	10 Years warranty and 20 years service life

Accessories



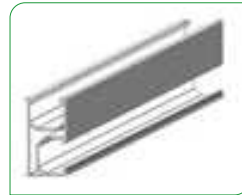
SF-AG-L48
Name : Aluminum Angle
Specs: Angle 48*48*5T*L



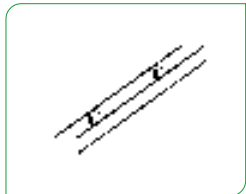
SF-ST-L32
Name : Square Tube
Specs: Square Tube 32*32*2T*L



SF-RC-01
Name : Rail Clamp Kit
Specs: Rail clamp kit L40
M8*25 Hexagon Socket Screw
M8 Flange Nut



SF-RM-R-Length
Name : Rooftop Rail
Specs: Rail 50*30*L



SF-RM-SP
Name : Rooftop Rail Connector
Specs: Rooftop Rail Connector L200
M8*25 Hexagon Socket Screw



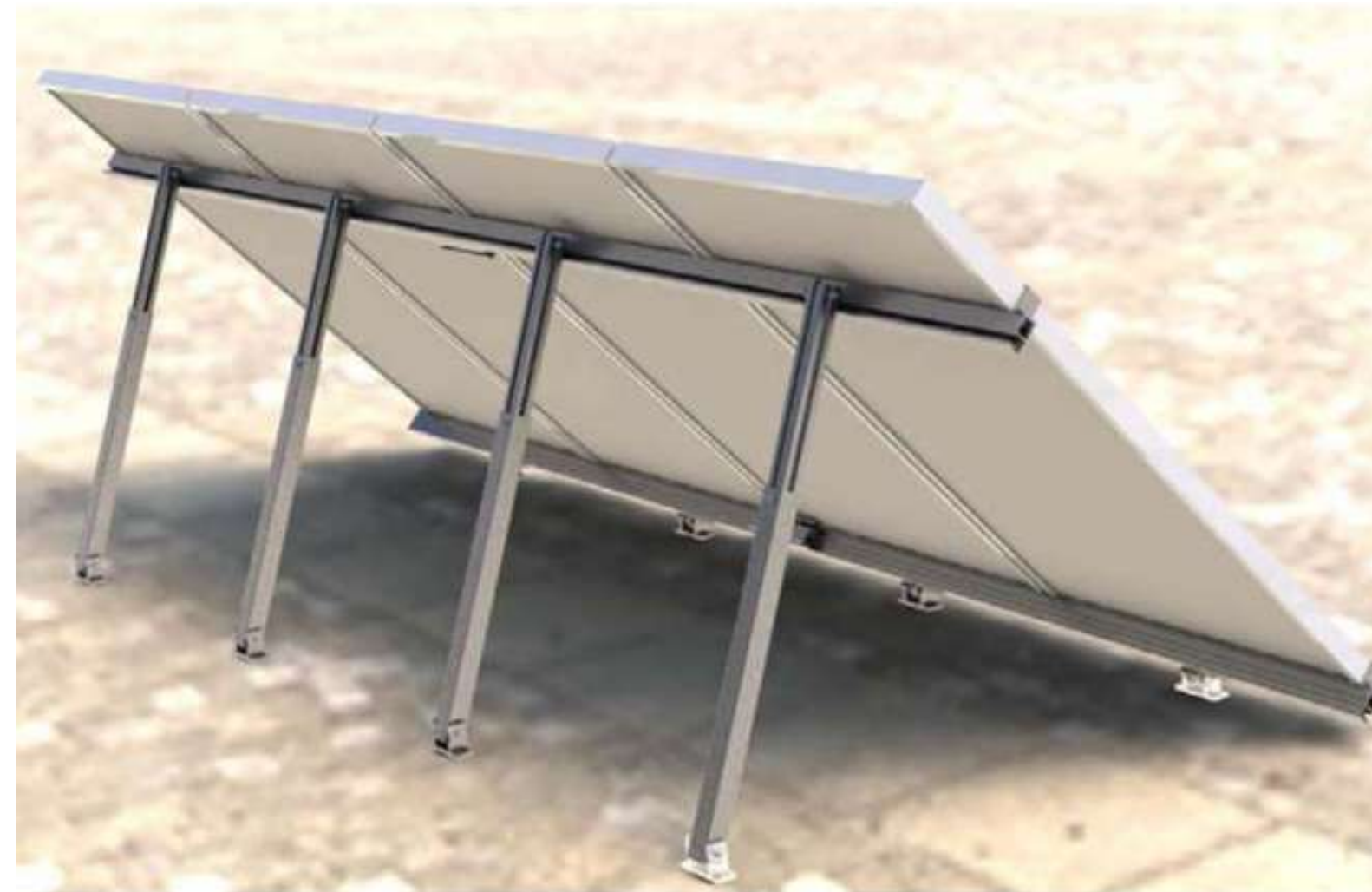
SF-IC-F40
Name : Inter Clamp Kit
Specs: Inter Clamp L40
M8*25 Hexagon Socket Screw
M8 Spring Nut

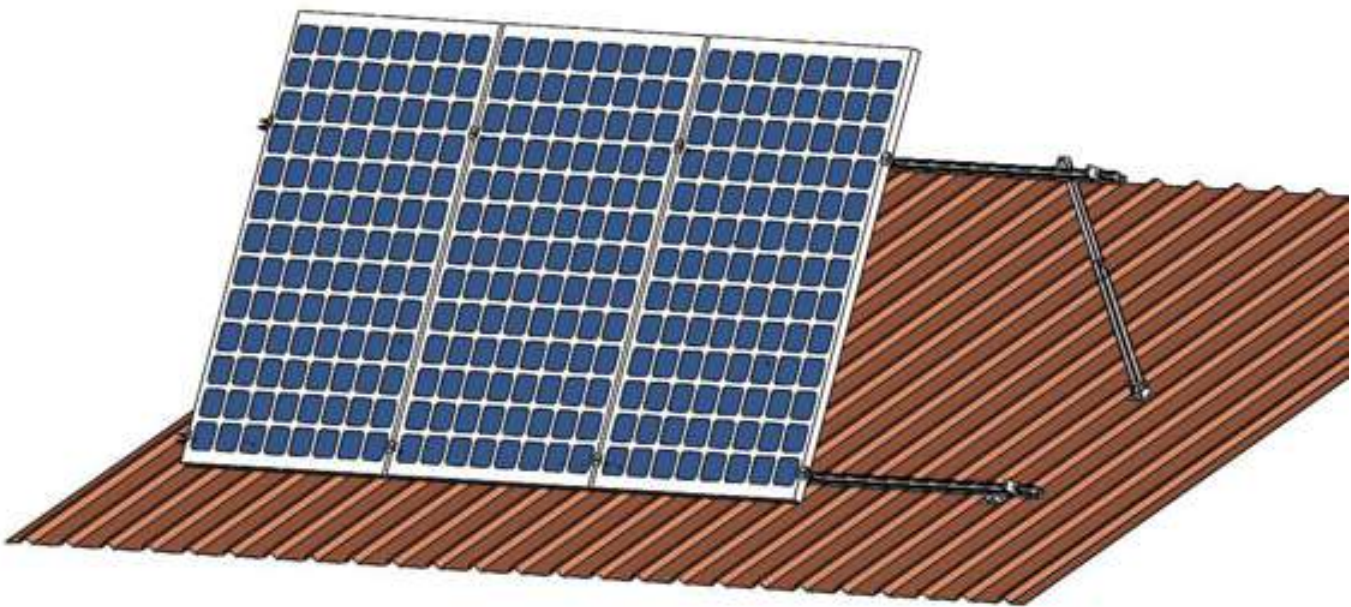
Features

- High-quality aluminum makes the racking system has a good performance on anti-corrosion.
- It not only fits for flat concrete roof but also pitched metal roof with less 10-degree.
- 10% of components are pre-assembled at factory that makes the installation work at site very easy.
- 10-year warranty and 20 years of service life is promised.

Adjustable Tilt Solar Racking System is applicable to install the usual framed module to tilt a certain angle with the roof. The solar system can be a fixed angle or adjustable such as 10~15 deg, 15~30 deg and 30~60 deg for your requirement. The special extruded aluminum rail, the tilt-in module, the clamp kit and the round leg can be high pre-assembly and make the installation easy and quick to save your labor cost and time.

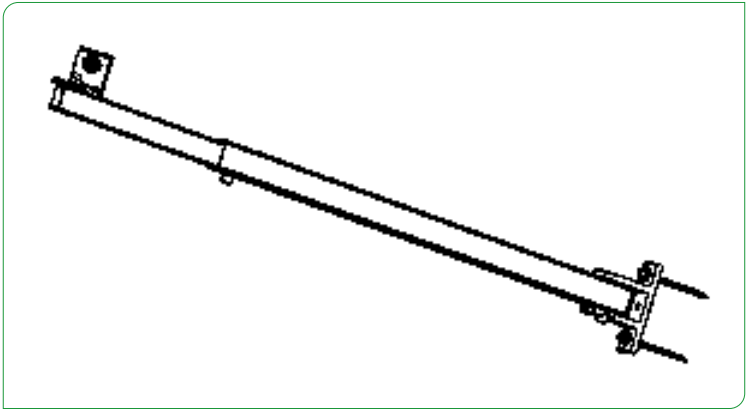
ADJUSTABLE TILE ROOF MOUNTING SYSTEM





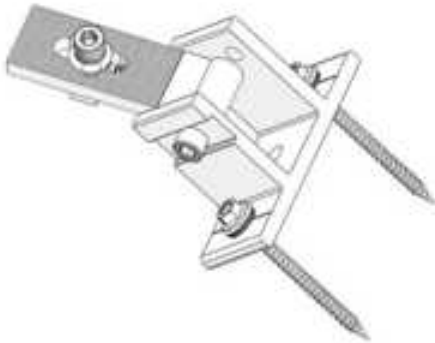
■ Technical Image

Accessories



SF-AD-RL
Name : Rear leg
Specs: Adjustable base
M8*45 hexagon socket screw
M6 wood screw
Waterproof washer
Square tube 40*40*3T
U tube 27*27*2T*L
M8*20 hexagon socket screw
M8 spring Nut
Angle 45*45*5T*L40
M8 nut
M8 spring
M8*28 hexagon socket screw
M8 washer Nut

SF-AD-FL
Name : Front leg
Specs: Adjustable base
M8*45 hexagon socket screw
M6 wood screw
Waterproof washer
Spindle
M8*28 hexagon socket screw
M8 spring
M8 washer
Nut



Technical Details

Installation site	Low profile roof or flat roof
Installation	Roof
Wind load	60m/s
Snow load	1.4KN/m2
Installation Angle	10-60
PV modules	Framed or frameless
Module orientation	Landscape or portrait
Standard	JIS C 8955/8956-2011
	GB50009-2012
	AS/NZS 1170
	DIN1055,IBC 2006
Material	Aluminum Alloy & Stainless Steel
Fastener parts material	SUS304
Anti-corrosive	Anodized
Warrenty	10 Years guarantee and 20 years duration

Features

- **Easy Installation**
Solar First mounting system with unique and adjustable modules can be easily mounted on the ground. Folded structure(40% of components are pre-assembled at factory) makes the installation work at site very easy.
- **Great Flexibility**
Concise and professional design allows low usage of materials which enables these mounting systems to be the most economical ones.
- **Wide Range of Application**
Three types of Foundation makes the structure fit for all kinds of soil condition.
- **Innovative Design**
The optimization of mechanical structure design to ensure minimum loading space structure and high level corrosion resistance treatment.